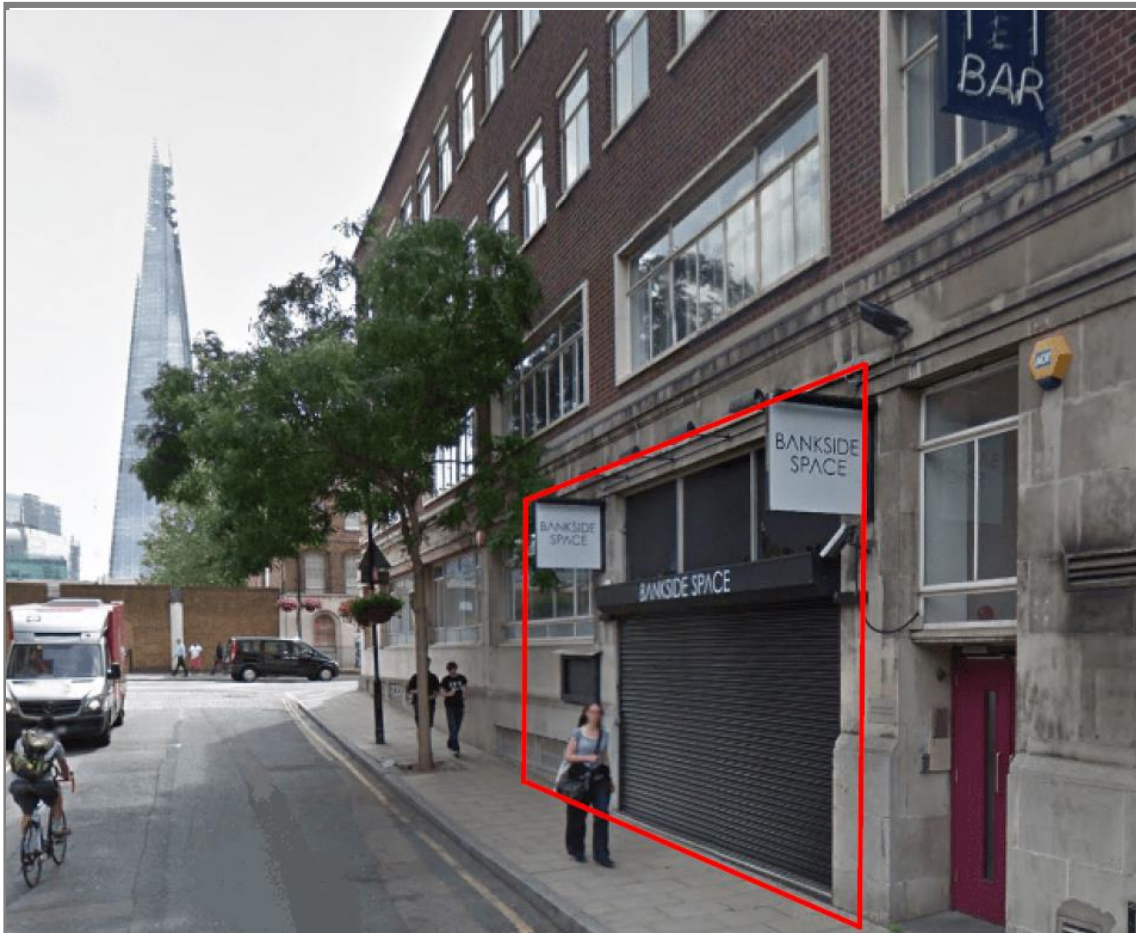


RESTAURANT TO LET

# LONDON SE1 – 32 SOUTHWARK BRIDGE ROAD

**nashbond**  
ALL ABOUT LONDON



## Location

The property is situated just off Southwark Bridge Road in close proximity to Shakespeare's Globe, Tate Modern, Bankside and Borough Market.

The Unit has a fully fitted commercial kitchen & Bar and is suitable for a variety of uses including crèche, health & fitness or a boutique cinema.

## Rent

Available on Request.

## Lease

The unit is available by way of a short term lease for a term to be agreed. Flexible terms and pop up licences will also be considered.

## Rates payable

Rateable Value (2017) £71,297  
Rates Payable (2017) £35,934 per annum

Subject to confirmation.

Further details are available from [www.voa.gov.uk](http://www.voa.gov.uk)

## Accommodation

The premises comprise the following approximate gross internal floor areas:-

### Restaurant

3,009 sq ft    279.5 m

### Kitchen & Ancil'

1,140 sq ft    105.9 m

### Total

4,148 sq ft    385.4m

## EPC

Available on request

## Legal Costs

Each party to bare its own costs.

Local Restaurants

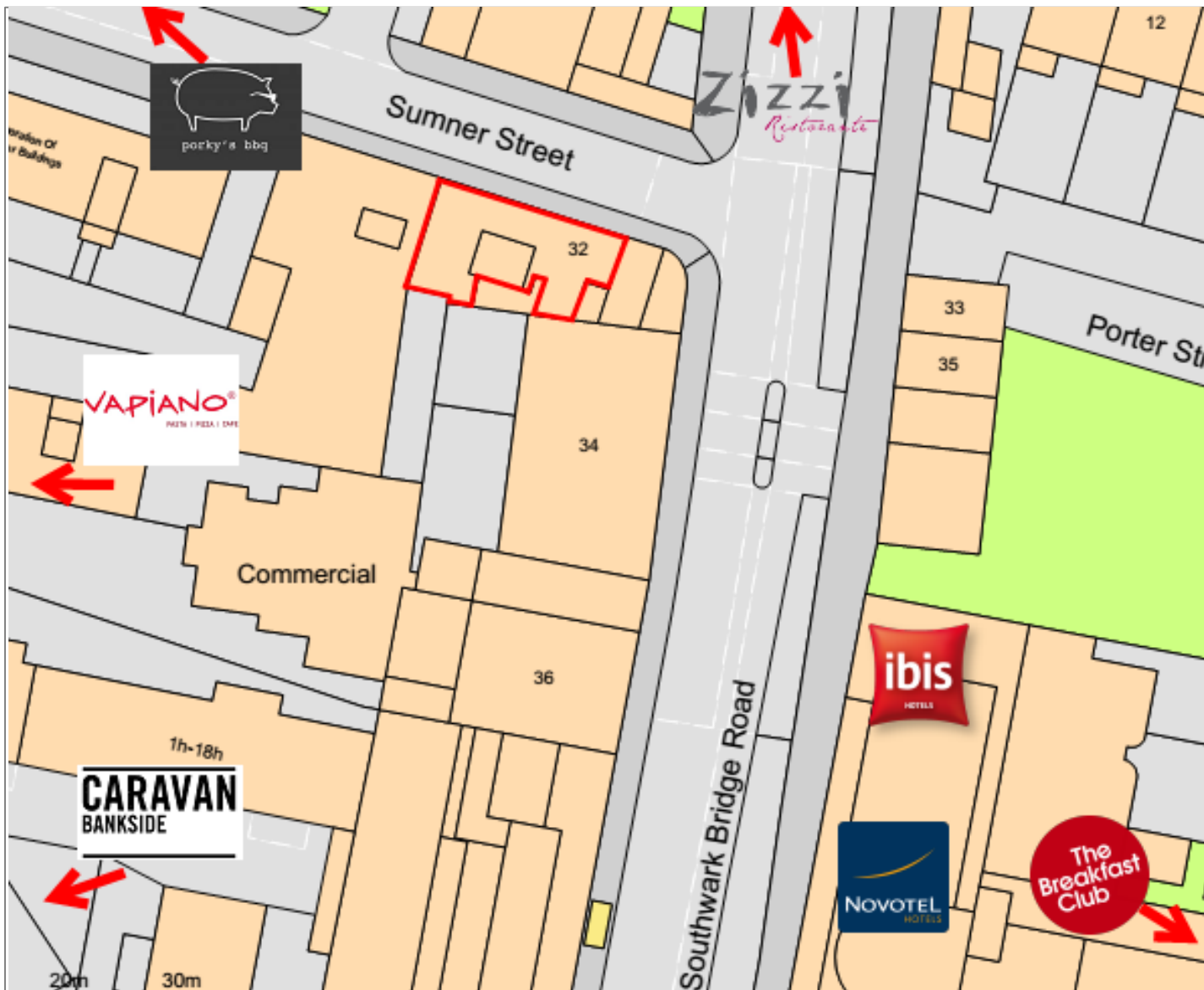


**CARAVAN**  
BANKSIDE

**VAPIANO**



**Zizzi**  
Restaurant



© UKMap Copyright The GeoInformation Group 2017 Licence No. LANDMLON100003121118.

## Contact

Gavin Rowlands  
[Growlands@nashbond.co.uk](mailto:Growlands@nashbond.co.uk)  
 +44 (0)207 290 4563

Ellie Grimes  
[Egrimes@nashbond.co.uk](mailto:Egrimes@nashbond.co.uk)  
 +44 (0)207 290 4555

Nash Bond  
 7 Portman Mews South  
 London  
 W1H 6AY



Whilst every care is taken in the preparation of these particulars Nash Bond Ltd and the vendor/lessor take no responsibility for any error, mis-statement or omission in these details. Measurements are approximate and for guidance only. These particulars do not constitute an offer or contract and members of the Agent's firm have no authority to make any representation or warranty in relation to the property. Nash Bond is the trading name of Nash Bond Ltd Registered Office Palladium House, 1/4 Argyll Street, London W1F 7LD Registered in England No. 7108824 Regulated by RICS.

